

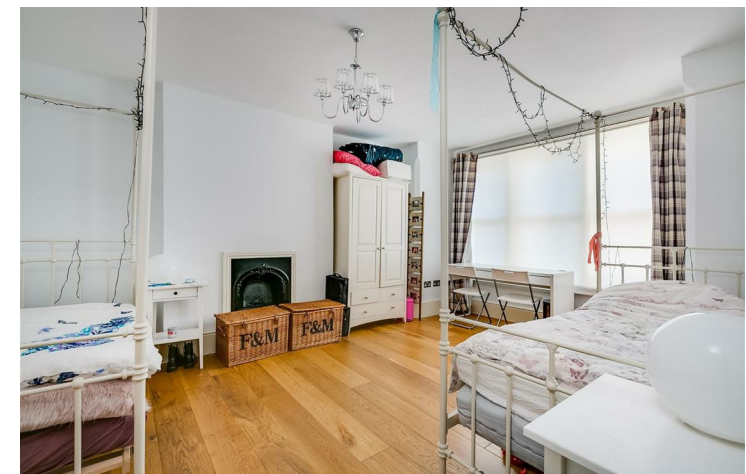
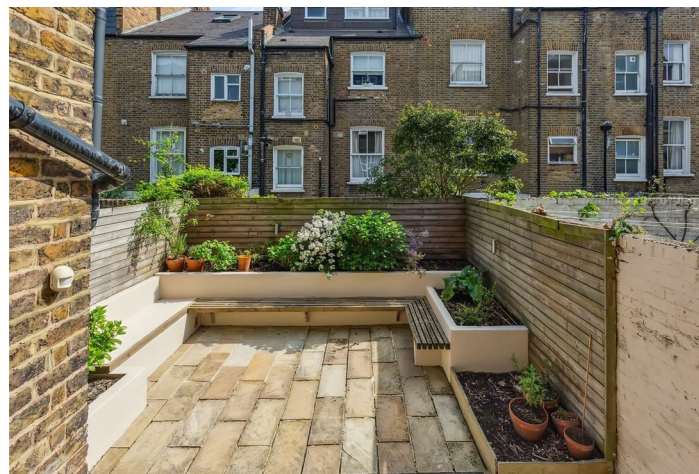


Linden Gardens, London, W4  
Guide Price £825,000

**WHITMAN & CO.**  
SALES · LETTINGS · COMMERCIAL



A beautifully presented duplex apartment with a private garden and entrance situated in this very popular residential road in the centre of Chiswick with the extensive shopping and restaurant facilities of Chiswick's main High Road just moments away. The accommodation provides a wonderful and spacious open plan living area with kitchen/dining/reception space, two double bedrooms, fitted bathroom and further shower room, a private landscaped garden, utility room, and a private entrance. Local transport links include Turnham Green and Chiswick Park tube stations, numerous local bus routes and convenient access via the A4/M4 to central London, Heathrow and The West. No onward chain.



## Linden Gardens, W4

Approximate gross internal area

95.97 sq m / 1033 sq ft



The floor plan is not to scale and measurements and areas shown are approximate and therefore should be used for illustrative purposes only. The plan has been prepared in accordance with the RICS code of Measuring Practice and whilst we have confidence in the information produced, it must not be relied on. If there is any aspect of particular importance, you should carry out or commission your own inspection of the property.  
Copyright of FeaturePRO.

- Lovely location in the heart of central Chiswick
- Private landscaped garden
- Two beds/two baths

- Split-level apartment
- Great for transport links and amenities
- No onward chain

Tenure - Leasehold  
Lease length - 114 years remaining  
Ground rent - £200 pa  
Maintenance charge - £500 pa  
Local authority - Hounlow  
Council tax - Band D

